



NOVA NICKEL PERMANENT VILLAGE CONSTRUCTION.

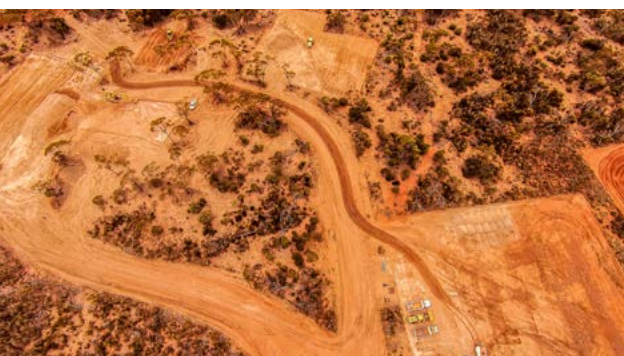
Location
Norseman, WA

Client
Kerman/Sirius Resources

Duration
6 weeks



CLICK TO WATCH
or visit vimeo.com/libertyindustrial



Project overview

Liberty Industrial was engaged by Kerman to undertake earthworks and civil works for the construction accommodation facilities at Sirius Resources Nova nickel project.

The project involved site preparation works for the Nova Nickel 496 person accommodation village and associated facilities on the Nova Nickel Project located 900km east of Perth and approximately 120km east of the remote mining centre of Norseman, Western Australia.

The scope of works included bulk and detailed earthworks and drainage to building areas including excavation, winning, haul, conditioning and compaction, trimming, grading, testing and all ancillary work and the supply and installation of all culverts, headwalls and rip rap and the construction of village roads and parking including earthworks, crushed stone, drainage, secondary paths and running track.

The project team were able to draw on their significant resource sector experience to deliver the works in accordance with stringent safety and environmental requirements and meet the challenges unique to a remote mining environment.

Liberty Industrial swiftly mobilised a small fleet of in-house plant and equipment to meet the demand of a tight 6 week program, with the project team undertaking all servicing and maintenance requirements on the remote site utilising an in-house service crew and equipment.

Comprehensive environmental management protocols were implemented for the protection of surrounding bushland and the typically strict industry safety compliance imposed for all mining operations applied.

Liberty Industrial's project team completed the works on schedule, achieving all commercial, safety, environmental and operational targets.